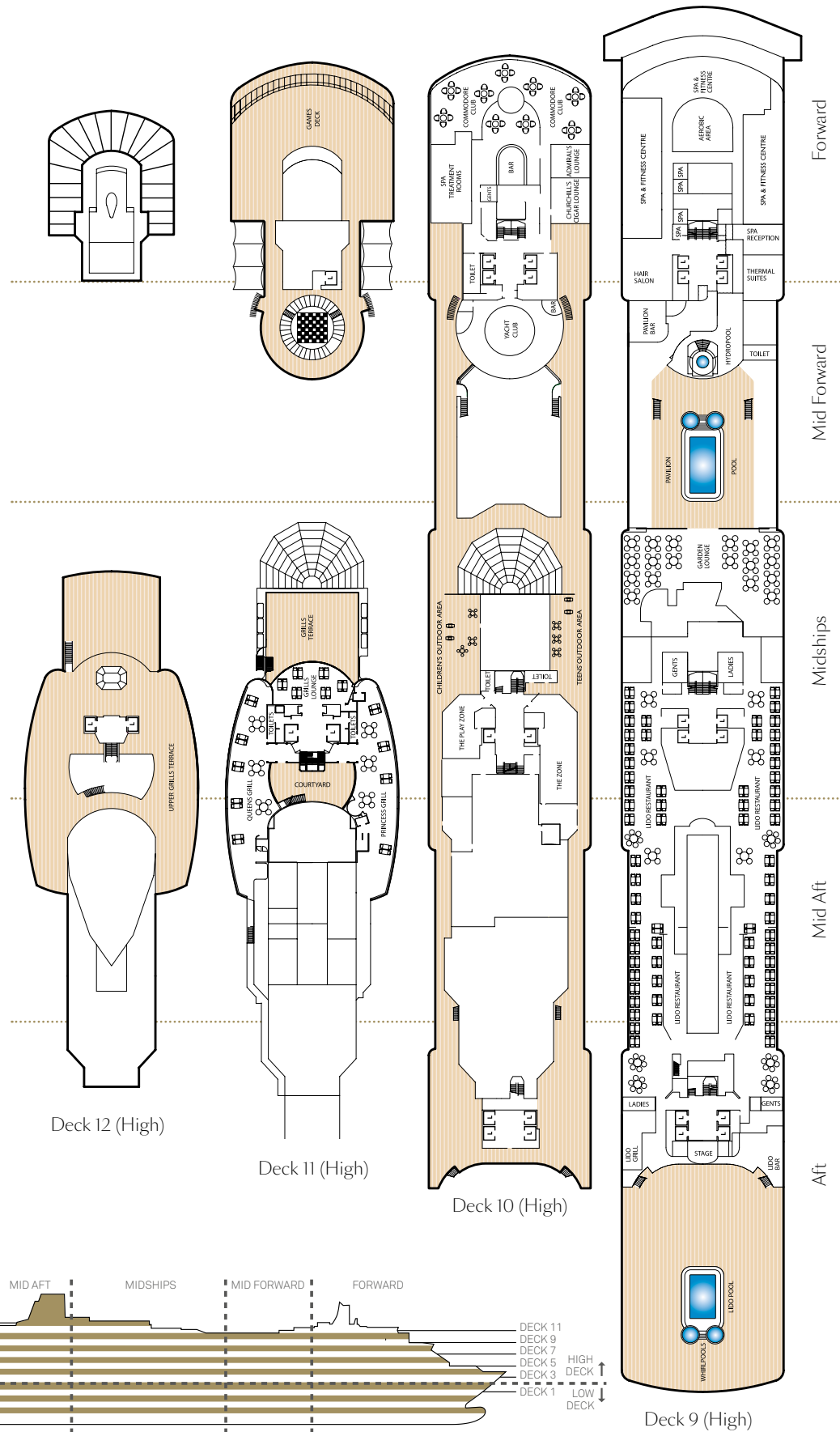


# Queen Elizabeth deck plans

**Ship facts - Queen Elizabeth**

Entered Service:	2010
Country of Registry:	Bermuda
Service Speed:	21.7 knots
Max Speed:	23.7 knots
Guest Capacity:	2,081
No. of Crew:	980
Length Overall:	964.5 feet
Width:	106 feet
Draft:	25.9 feet

View Queen Elizabeth stateroom accommodation and virtual tours at [cunard.com/qe](http://cunard.com/qe)



# Stateroom Category

## Grand Suites

Aft High Decks 6,7 **Q1**

## Master Suites

Midships High Deck 7 **Q2**

## Penthouse

Midships High Decks 4,5,6,8 **Q3**

Midships/Aft High Deck 7 **Q4**

## Queens Suites

Aft High Decks 4,5,8 **Q5**

Forward/Aft High Decks 4,5,7,8 **Q6**

## Princess Suites

Midships High Decks 7,8 **P1**

Midships/Forward High Decks 4,5,6 **P2**

## Club Balcony

Midships High Decks 6,7,8 **A1**

Midships High Deck 8 **A2**

## Balcony

Midships High Decks 5,6,7 **BA**

Midships High Decks 5,6,7,8 **BB**

Midships High Decks 4,8 **BC**

Aft High Decks 5,6,7 **BD**

Forward/Aft High Decks 4,5,6,7,8 **BE**

Forward High Decks 4\*,8 **BF**

## Balcony (partially obstructed view)\*

Midships High Deck 5 **CA**

Midships High Decks 4,5 **CB**

## Oceanview

Midships Low Deck 1 **EB**

Midships/Aft Low Deck 1 **EC**

Forward High Deck 6\* **EF**

Forward Low Deck 1 **EF**

## Oceanview (obstructed view)\*

Midships High Deck 4 **FB**

Midships High Deck 4 **FC**

## Deluxe Inside

Midships High Decks 6,8 **GA**

Midships Low Deck 1 **GB**

Midships Low Deck 1 **GC**

## Standard Inside

Midships High Decks 7,8 **IA**

Aft High Decks 5,6,7 **ID**

Forward/Aft High Decks 4,5,6,8 **IE**

Forward High Decks 4,8 **IF**

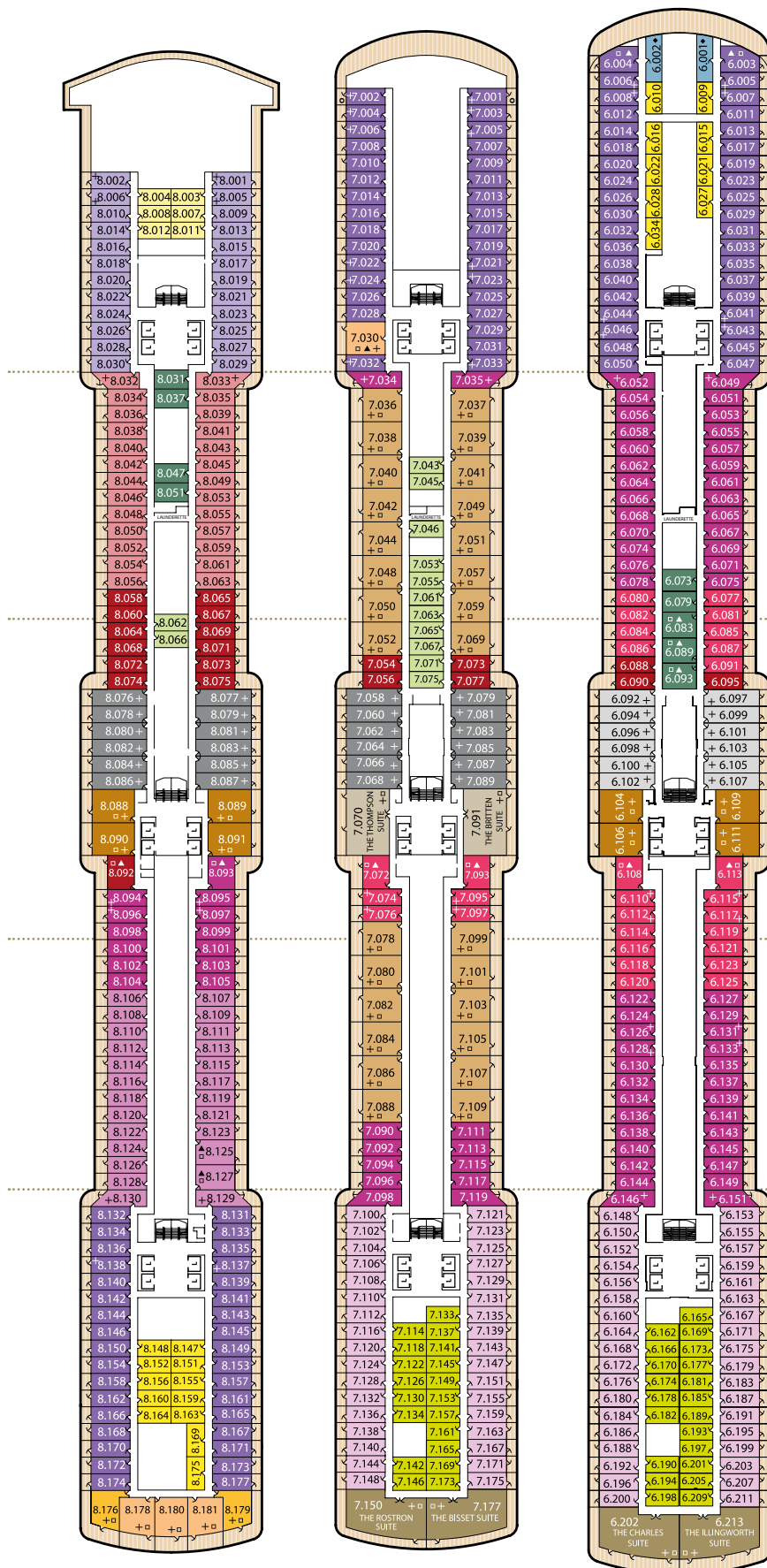
## Single

Oceanview Midships, Low Deck 2 **KC**

Inside Midships, Low Deck 2 **LC**

## Key to symbols

- L Lift
- † Indicates 2 lower berths and 1 upper berth
- + Indicates 3rd berth is a single sofa bed
- ‡ Indicates 3rd and 4th berth are a single sofa bed and one upper bed
- ¥ Indicates 3rd and 4th berths are single sofa beds
- \* Staterooms have views obstructed by lifeboats
- X Views partially obstructed by lifeboat mechanism
- ▲ Wheelchair accessible
- Indicates powered mobility device friendly stateroom
- Balcony is shaded by deck structure above
- ◆ Staterooms have forward facing ocean views
- Staterooms have metal fronted balconies

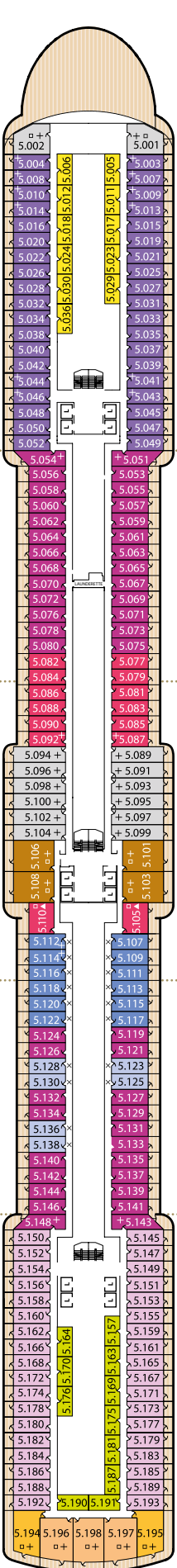


Deck 8 (High)

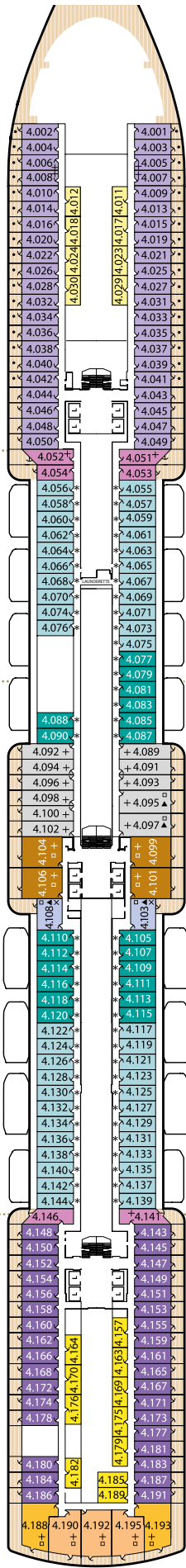
Deck 7 (High)

Deck 6 (High)

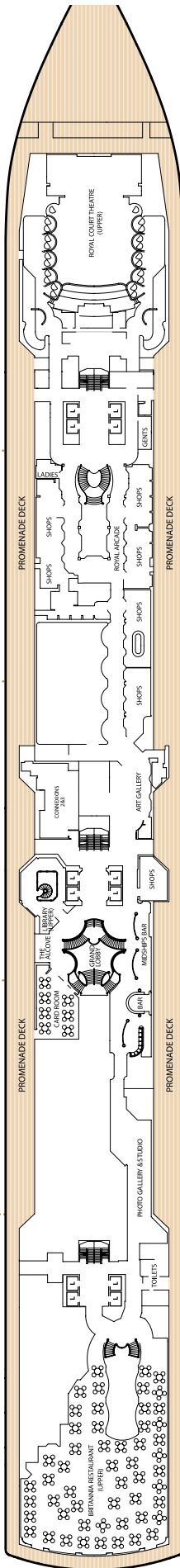
A1 Staterooms 6.088, 6.090, 6.095 available for booking from November 2024, for sailings from 14 March 2025.



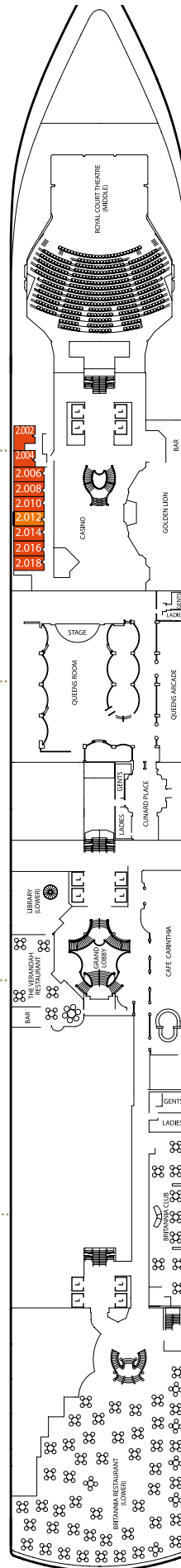
Deck 5 (High)



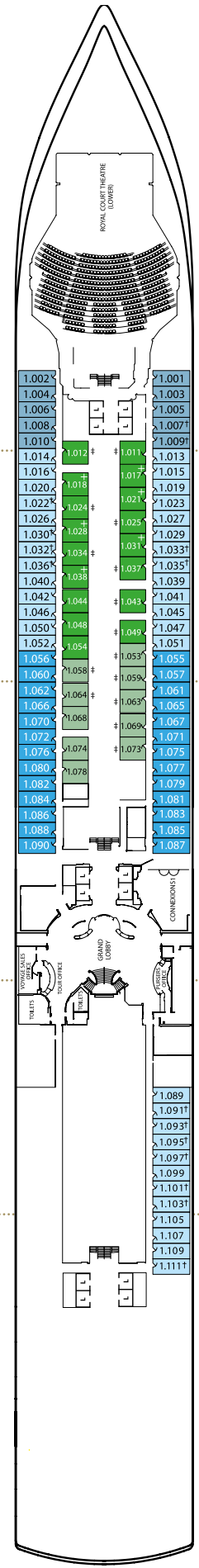
Deck 4 (High)



Deck 3 (High)



Deck 2 (Low)



Deck 1 (Low)

Forward

Mid Forward

Midships

Mid Aft

Aft